

Business by the Beach



Economic Development
Corporation of Oxnard

400 E. Esplanade Dr., Suite 301
Oxnard, CA 93036
ph (800) 422-6332 • fx (805) 385-7452
www.edco.us • info@edco.us

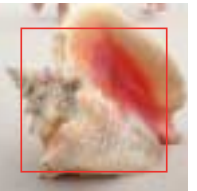
Oxnard
California



Economic Development
Corporation of Oxnard



Providing "Concierge Treatment" to the business community



Concierge (kôn-syerzh´) *n.*,
One who provides special services
and advice to guest or clients.

Much like any five-star hotel offering its guests congenial and resourceful services at the concierge desk, the Economic Development Corporation of Oxnard (EDCO) provides the local business community with a variety of business-enhancing services. Committed to providing exceptional service, EDCO offers a broad range of assistance programs, easy access to local government structures and unparalleled knowledge of the local community, all at the same cost you would expect to pay for top-notch hotel concierge assistance - nothing.

Experience the five-star service that is the pride of Oxnard's business community. Experience the "concierge treatment" at EDCO.

who we are

EDCO is a staff of four dedicated professionals who are governed by a Board of Directors, composed of private business leaders and two Oxnard City Council Members.

what we do

EDCO knows that relocating and/or expanding a business is a complex process. From start to finish, EDCO is here to assist your business and help you navigate a course through the City's maze of requirements. With EDCO's help, your company will save both time and money.

Services offered include:

Location Assistance

Complimentary site and facility searches.

Assisting companies with informal "trial balloon" inquiries at the City for acceptance of specific uses at specific sites. These inquiries allow companies to investigate all available site options before committing to any one particular site.

Permit Assistance

Providing free estimates of City fees associated with a project.

Acting as the company's representative, EDCO offers companies complimentary processing and delivery of a variety of city-required licenses and permits.

In cooperation with the City of Oxnard, EDCO offers a time-specific guarantee for permit processing.

Port Services

Recognizing the many benefits of its close proximity to a world-class port, EDCO offers companies easy access to the Port of Hueneme/Oxnard Harbor District and Foreign Trade Zone Offices.

Reference Library

Providing access to a wide array of local demographic information and statistical data.

Access to Port Services

EDCO will make formal introductions to the key staff members at City Hall whose cooperation will be needed for successful project completion.

EDCO will make formal introductions to the key staff members at City Hall whose cooperation will be needed for successful project completion.

EDCO has close working relationships with a host of other organizations dedicated to serving a growing business community. Agencies, such as the SBDC (Small Business Development Center), CNTC (California Manufacturing Technology Center), WEV (Women's Economic Ventures) and the Port of Hueneme, and others, are happy to assist companies referred by EDCO.

Staffing Assistance

Advertising a company's employment opportunities by listing local job openings on their website.

Assisting companies looking for qualified employees by screening resumes of interested applicants.

Training Assistance

EDCO has secured a contract with the Employment Training Panel (ETPP) to implement employee-training programs for local businesses. Companies may be eligible for reimbursement of the training costs associated with self-administered programs or for programs done through other training organizations. EDCO will help you identify the right program for your company.



What is EDCO?

Established in 1994, EDCO, the Economic Development Corporation of Oxnard, is a private, non-profit corporation dedicated to facilitating business growth in the Oxnard & Port Hueneme areas. EDCO's mission is to both assist local companies and relocating companies with business expansion and relocation problems and act as a business community advocate. Together with the staffs and city councils of Oxnard and Port Hueneme, EDCO works tirelessly to help achieve a competitive business environment and healthy economy. The end result is better paying jobs for area residents and a higher standard of living and better quality of life.



Working together

Business growth made easy

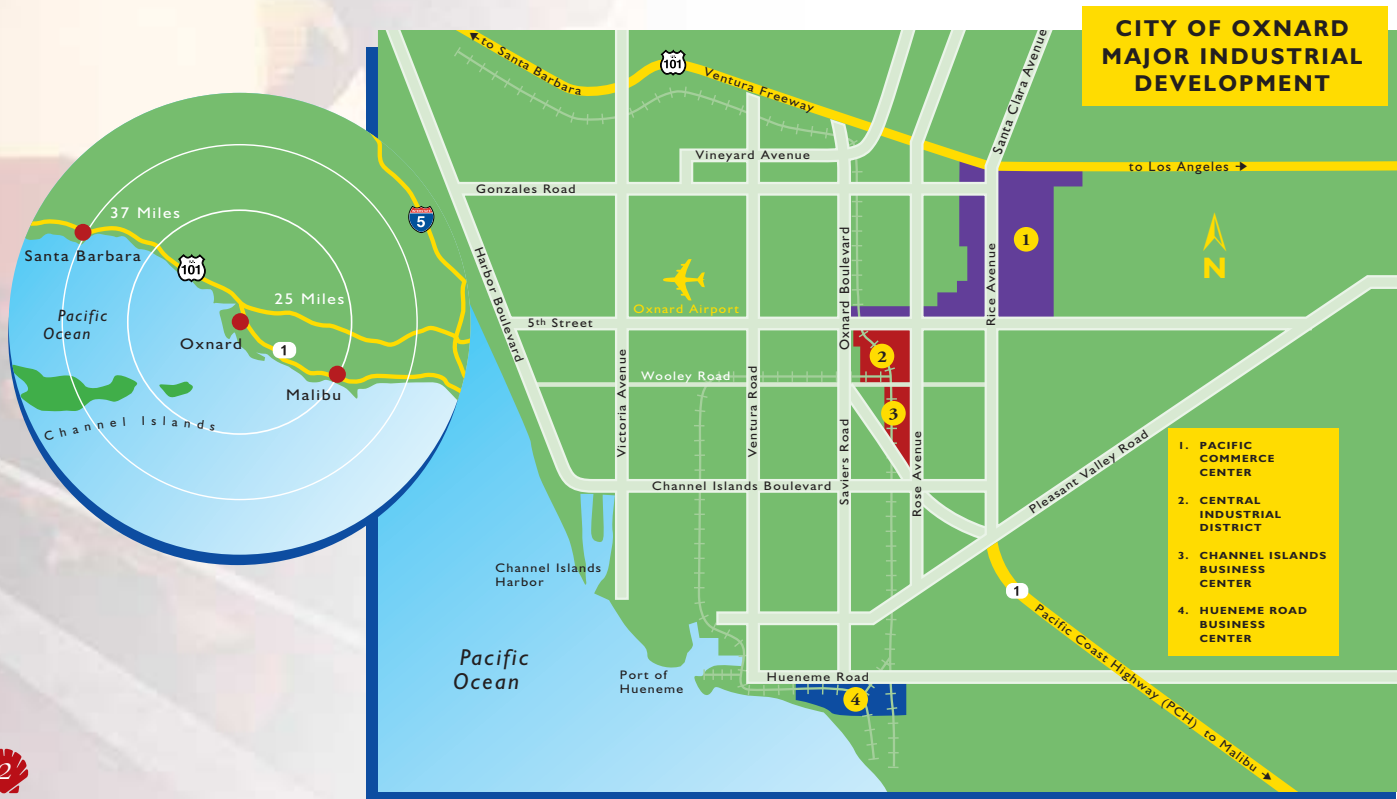
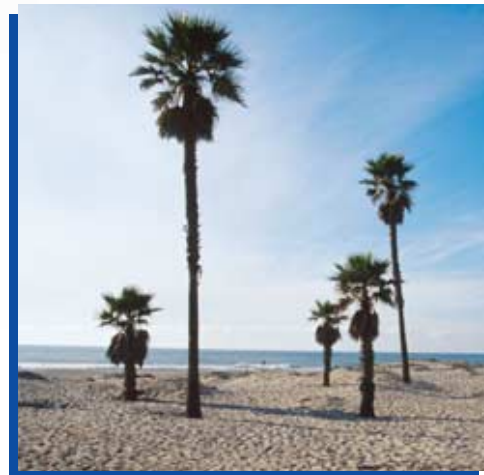
Location

The City of Oxnard is located in western Ventura County midway between Santa Barbara and Los Angeles. Oxnard is the 20th largest city in California and the 120th largest in the United States.

The existing corporate boundaries of the City of Oxnard include approximately 15,500 acres (24 square miles) surrounded by beautiful coastal mountains and the breathtaking Pacific Ocean. A youthful, vibrant community, Oxnard has all the advantages of small town living, yet is large enough to offer the cultural diversities of a big city.

Currently, the agricultural areas north and east of the City are protected as part of an adopted multi-jurisdictional Greenbelt Agreement, to ensure that Oxnard will always have distinguishing boundaries from adjacent cities.

With its beautiful sandy beaches and endless sunshine, the City of Oxnard offers a quality of life found nowhere else on California's Central Coast.



Industrial Districts

There are four major industrial areas in the City: The Pacific Commerce Center, The Channel Islands Business Center, The Hueneme Road Industrial District and The Central Industrial District.

Pacific Commerce Center

The Pacific Commerce Center (PCC) consists of approximately 1,400 acres located in the northeast portion of the City. PCC contains 800 acres of light manufacturing (M-1), 245 acres of limited industrial (M-L), and 325 acres of business and research park (BRP)

Channel Islands Business Center

The Channel Islands Business Center (CIBC) consists of 211 acres with zoning designations for both M-L and BRP. At total build-out, the CIBC is expected to generate 3.25 million square feet of manufacturing and 750,000 square feet of BRP uses.

Hueneme Road Industrial District

The Hueneme Road Industrial District consists of 185 acres of both heavy and light industrial uses. The area's proximity to the Port of Hueneme has created a cluster of port-related light manufacturing and vehicle preparation operations.

Central Industrial District

The Central Industrial District consists of approximately 240 acres of established medium and heavy manufacturing and distribution warehousing. The area is zoned M-2 (Heavy Manufacturing).



BMW Group's North American Testing Center

► BMW's North American engineering and vehicle emission testing center is located on Arcturus Ave. in Oxnard. Adjacent to the Port of Hueneme, BMW's largest sit in California covers 11 acres and employs over 250 people.



Haas Automation

► Haas Automation is the largest manufacturer of advanced machine tools in the United States building a full line of machine tools and rotary products. The 800,000 sq. ft. Haas Service Center in Oxnard employs over 700 people.



Larrivee Guitars

► Since 1967, Larrivee Guitars has been producing some of the finest sounding, finest playing guitars in the world. Based in Vancouver, B.C., Larrivee Guitars chose the city of Oxnard to house their only U.S. manufacturing facility.



Raypack, Inc.

► For over 50 years, Raypak has been recognized as the world's leading maker of cooper finner boilers and heaters. Raypaks' corporate headquarters and primary manufacturing facility are housed in a 235,000 sq. ft. state-of-the-art building in Oxnard.

transportation

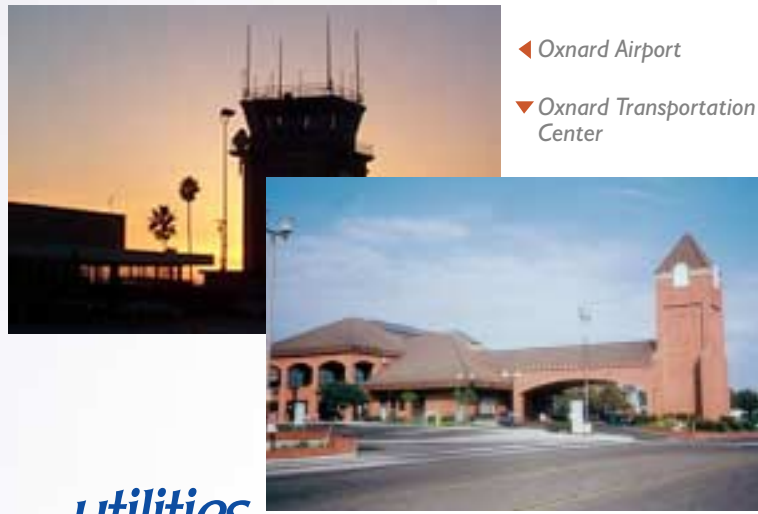
Transportation in and around Oxnard is made easy due to the city's modern Rail and Bus Transportation Center, regional Airport and central location near several major California highways.

The Oxnard Transportation Center (OTC) is the city's hub for rail and bus service. At the corner of 4th and Oxnard Blvd (California Route 1), the OTC provides facilities and stops for Amtrak inter city trains operating from San Diego to Santa Barbara and San Luis Obispo and from Los Angeles to Seattle, as well as Metrolink Commuter trains to the San Fernando Valley and Los Angeles areas. In addition, Greyhound and South Coast Area Transit (SCAT), City of Oxnard Dial-a-Ride and County Transit (VISTA) buses use the terminal as well.

Opened in 1934, the Oxnard Airport is classified as a non-hub commercial service airport providing local air charter service and commuter flights to Los Angeles and Arizona airports. Conveniently located less than two miles from Oxnard's business district, the airport serves United Express and America West Express airlines, as well as offering travelers with helicopter charter service and car rental and travel agency options.

Highway 101, which stretches from Los Angeles to Washington State, passes through the center of Oxnard providing area commuters and truckers easy access to one of California's major north/south transportation corridors. Twenty-seven miles east of Oxnard, Highway 126 connects with Interstate 5, providing access to the state's only continuous north-south interstate route. For those seeking breathtaking coastal scenery and a slower pace, California's Route 1 veers off from Highway 101 in Oxnard taking travelers to Los Angeles via the beautiful California coastline.

Highway 101, which stretches from Los Angeles to Washington State passes through the center of Oxnard...



◀ Oxnard Airport

▼ Oxnard Transportation Center

utilities

Water Service – City of Oxnard

The City of Oxnard purchases its water from the Calleguas Municipal Water District (CMWD) and United Water Conservation District (UWCD). The water supply originates in northern California and is conveyed over 500 miles to Southern California through the State Water Project's system of reservoirs, aqueducts and pump stations. Oxnard's water rates, which are figured on a two-tier, inclining block rate structure, are some of the lowest of any city in Ventura County.

Solid Waste – City of Oxnard

The Del Norte Regional Recycling and Transfer Station (Del Norte) is a unique \$25 million regional transfer and materials recovery facility located on Sturgis Road in Oxnard. Del Norte processes approximately 1,200 tons of refuse and recyclables per business day and provides services to municipalities and the commercial, industrial and residential sectors. Del Norte, which is owned by the City of Oxnard and operated by the private sector, supports the solid waste reduction and disposal needs of the community and helps the city divert over 60% of its waste from going to local landfills.

Electrical Power

Southern California Edison provides electrical power to Oxnard consumers. Through a variety of business-specific programs, Southern California Edison helps businesses make informed site location decisions, use energy more efficiently, improve productivity and identify ways to reduce operating costs.

Natural Gas

The Southern California Gas Company provides natural gas service in Oxnard to residents and businesses. The Southern California Gas Company, the nation's largest natural gas supplier, offers businesses a variety of cost-savings, incentive and rebate programs.

oxnard harbor district

The Port of Hueneme has emerged in recent years as one of California's fastest growing seaports. Since the port's designation as a U.S. Port of Entry and the establishment of Foreign Trade Zone # 205 cargo throughput has risen to record levels. As the license holder of the Oxnard World Trade Center, the Oxnard Harbor District strongly promotes the development of import and export activities within the business community. The Port moves more than \$4 billion in cargo value each year and is the nation's leading source of citrus exports. International businesses use the Port of Hueneme as their gateway for trade between North and South America, Asia, Europe and Scandinavia.

The Port's overall economic impact of nearly \$ 535 million in direct economic activity and 3800 jobs annually for the County's economy spotlight's it's position as one of Ventura County's most dynamic economic engines. The Port of Hueneme has more than 170,000 square feet of dockside refrigerated warehouse space serving fresh agricultural shippers and refrigerated ocean carriers. These facilities position the Port as a major player in the United States for fresh fruit and produce cargoes and the top-ranking seaport in the nation for citrus export.

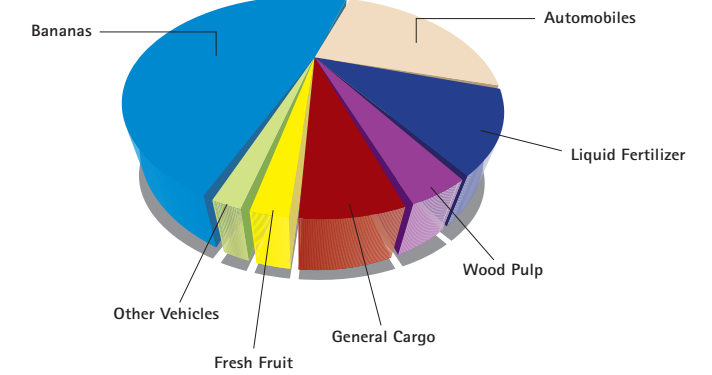
Additionally, the Port of Hueneme continues to thrive on the movement of automobiles and heavy equipment. BMW, Hyundai, Land Rover, Jaguar, Mazda, Mini Cooper, Mitsubishi, Rolls Royce, Suzuki, Saab and Volvo all move automobiles destined for the Western U.S. through the Port of Hueneme.



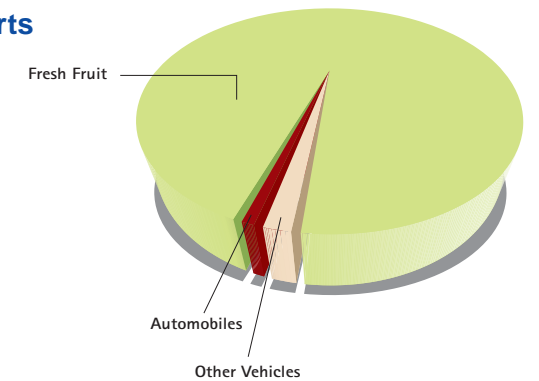
The Port's success is due in part to its geographical position less than 60 miles from the greater Southern California market. It's unique position near the Santa Barbara Channel also makes Hueneme the primary support facility for the Central Coast's offshore oil industry, as well as for an active commercial fishing industry.

Flexibility of facilities and innovative services add to the Port of Hueneme's attraction. Near dock rail service is provided by the Ventura County Railroad to the Union Pacific mainline in nearby Oxnard.

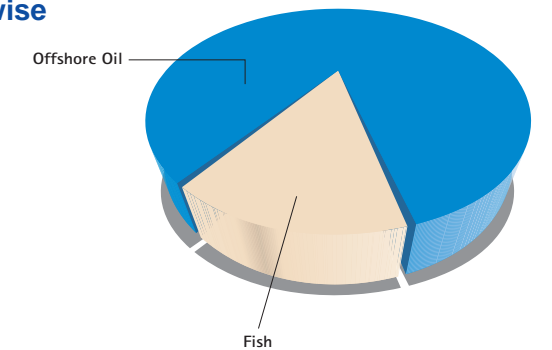
Imports



Exports



Coastwise



retail

With over 1.8 billion in retail sales each year, Oxnard offers shoppers a wonderful mix of retail choices including specialty shops, big box discounters, outlet centers and regional malls. An Oxnard shopper can find everything from fresh fruit and vegetables at the weekly farmers market, to upscale fashions at the Esplanade Mall to unique gifts at the specialty shops at the Fisherman's Wharf. For those searching for a new set of wheels, the Oxnard Auto Center has nine auto dealerships to choose from and for diners, Oxnard offers a delicious array of eating



establishments ranging from large national chains to small family-run restaurants.

real estate

Whether you prefer a historic Victorian, beachside bungalow or newly constructed family home, Oxnard has what you are looking for. Housing options abound in the city where new modern residential developments are sprouting up alongside mature tree-lined neighborhoods. Oxnard boasts some of the most affordable homes in Ventura County and the area's most diverse selection of housing types. Oxnard residents enjoy a multitude of recreational options within a small geographical area.

Oxnard has an unbeatable temperate climate, more than seven miles of public beaches, 35 city parks and a State Beach Campground, all within the city's limits.



livability

Average Temperatures

	Jan	Feb	Mar	Apr	May	Jun	Jul	Aug	Sep	Oct	Nov	Dec	Year
° C	12.9	13.2	13.5	14.6	15.7	17.3	18.9	19.6	19.2	17.7	15.2	12.9	15.9
° F	55.2	55.8	56.3	58.3	60.3	63.1	66.0	67.3	66.3	66.9	59.4	55.2	60.6

Source: Oxnard, Ventura County data derived from NCDC TD 9641 Clim 81 1961-1990 Normals. 30 Years between 1961 and 1990

Rainfall

	Jan	Feb	Mar	Apr	May	Jun	Jul	Aug	Sep	Oct	Nov	Dec	Year
mm	86.3	76.2	62.2	26.1	3.3	1.2	0.2	1.3	3.5	9.3	39.8	66.4	376.5
Inches	3.4	3.0	2.4	1.0	0.1	0.0	0.0	0.1	0.1	0.4	1.6	2.6	14.8

Source: Oxnard, Ventura County data derived from NCDC Cooperative Stations, 60 complete years between 1931 and 1995

Air Quality

Days Exceeding Federal & State Air Quality Standards

	Oxnard	Ventura Cty.	L.A. Basin
2000			
State (1 hour)	0	38	57
Fed (1 hour)	0	1	12
2001			
State (1 hour)	0	34	121
Fed (1 hour)	0	2	36
2002			
State (1 hour)	0	22	118
Fed (1 hour)	0	1	49

Thanks to its temperate climate, natural beauty, vibrant economy, recreational offerings and strong community spirit, Oxnard is the fastest growing city in Ventura, Santa Barbara and San Luis Obispo counties. More and more people are finding that the city of Oxnard is the ideal place to raise a family and run a business.

Health Care

St. John's Regional Medical Center (SJPMC) serves Oxnard.



Established in 1912, SJPMC has grown from a small six-bed wooden structure to a 230-bed, state-of-the-art, regional medical facility that successfully combines medical expertise with modern technology.

Located on a 48-acre parcel in northeast Oxnard, St. John's provides Oxnard's growing population with comprehensive and compassionate medical care. SJPMC offers a wide range of medical services including cardiac care, pediatric and maternity services, a comprehensive 57-bed rehabilitation and industrial medicine program, oncology and emergency services.

Police Protection

The Oxnard Police Department has over 200 sworn officers serving the protection needs of its residents. Since the inception of Oxnard's nationally recognized neighborhood watch program, the residential burglary rate has declined more than 80%. Over the past ten years, violent crime in Oxnard has dropped nearly 50% and in 2002, Oxnard was ranked as the 5th safest city in the United States among 45 comparably-sized cities. In fact, Oxnard's crime rate is lower than neighboring Ventura and Santa Barbara.



education

California State University

Channel Islands Opened in the fall of 2002, Cal State University Channel Islands (CSUCI) is the 23rd campus in the nation's largest public education system – the California State University system. The 670-acre Cal State University Channel Islands campus in Camarillo boasts of beautiful Spanish architecture, dramatic natural surroundings and an exceptional academic environment. CSUCI is poised to meet Ventura County's growing demand for higher education and anticipates an enrollment of more than 15,000 students by the year 2025.

Oxnard College

Oxnard Community College, a public comprehensive two-year community college, offers excellent academic transfer options, vocational training and basic skills education for students of every age and academic level. Oxnard College partners with local high schools to coordinate an easy transition to higher education and works closely with business and industry to provide relevant workplace training programs.

High Schools

For over 100 years, the Oxnard Union High School District has served a diverse community that stretches from North Oxnard, to Camarillo to Port Hueneme. The District has over 15,000 students on six comprehensive sites and is particularly proud of its two brand new state-of-the-art high school campuses.

Other Oxnard Area Educational Institutions:

Brooks Institute of Photography
California Lutheran University
CSU Northridge
CSU Northridge Extension
ITT Technical Institute
St. John's Seminary
Thomas Aquinas College
UC Santa Barbara (UCSB)
UCSB Extension
University of La Verne
Ventura College of Law
Ventura Community College

Oxnard College



CSUCI



Pacifica High School



population

Based on recent Census and California Department of Finance figures, the city of Oxnard has the largest population of all the other cities in Ventura County. Over 180,000 people currently call Oxnard home and the city's population is growing at a rate of approximately 1% per year.

Oxnard is a young town with the average age of a resident being less than 30 years old. Those living in Oxnard prefer to work close to home as is evidenced by the fact that their average travel time to work is less than 25 minutes. Oxnard is a family town with over half of its residents having children and owning their own homes. Oxnard has an ethnically diverse population with a high concentration of Latino and Hispanic residents.

In an effort to meet the housing and educational demands of a growing population, Oxnard is aggressively building new homes and schools. Oxnard is extremely proud of its many new residential developments and two new state-of-the-art high schools.